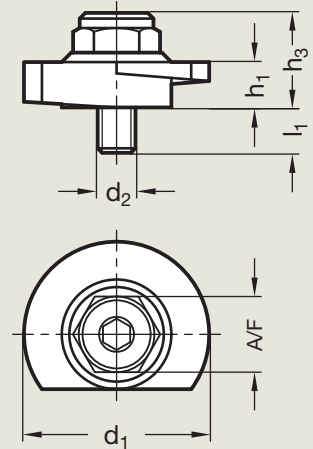


Range extended!

INOX  
STAINLESS  
STEEL



Type **KV** with ball lever / serrations  
Type **SK** with hexagon

Clamping direction **R** clockwise rotation (drawn version)  
**NEW** Clamping direction **L** anti-clockwise rotation

d <sub>1</sub>	d <sub>2</sub>	d <sub>3</sub>	d <sub>4</sub>	h <sub>1</sub>	h <sub>2</sub>	h <sub>3</sub>	h <sub>4</sub> ≈	l <sub>1</sub>	l <sub>2</sub> ≈	A/F
50	M 10	28	30	12	34,5	24	62	11	109	19

### Specification

#### ► GN 918.2

Steel

blackened

Eccentric cam and washer case hardened

Screw bolt nitrided

Tensile strength 800 N/mm<sup>2</sup>

#### ► GN 918.7

Stainless Steel

Eccentric cam

German Material No. 1.4305 chemically nickel plated

Screw bolt and washer

German Material No. 1.4201 tempered, chemically nickel plated

Ball lever handle (Type KV)

German Material No. 1.4305 matt shot blasted

#### ► Ball knob DIN 319

Plastic, black

general catalogue page 66

### Information

Clamping bolts GN 918.2 / GN 918.7 are fitted with a rotating helix. They allow rapid and safe clamping and releasing with a relatively long movement and high clamping force. The small rising angle of the helix makes it self arresting.

The ball handle is linked with the clamping mechanism via a serrated ratchet thus allowing an individual positioning of the hand lever.

Bolt and washer are matched to allow an effortless release from the clamped position. The washer „saves“ special requirements to the execution of the female thread and the clamping bolt can therefore also be used on T-Nuts on machine beds.

Clamping bolts offer the advantage that they can be rotated away from the clamping area after release.

Clamping bolts can also be used as stepless adjustable end stops. If the washer is removed the bolt can be clamped direct to its support.

Spherical clamping bolt GN 605 are recommended for use with these clamping bolts.

Technical instructions for  
GN 918.2 / GN 918.7

### How to order

#### Clamping bolt GN 918.2-50-SK-R

Code no.	d <sub>1</sub>	Type	Clamping direction

#### Stainless Steel- Clamping bolt GN 918.7-50-KV-L

Code no.	d <sub>1</sub>	Type	Clamping direction