

Type **AP3** forked clamping arm  
Type **EP3** solid clamping arm

Coding **M** magnetic piston from size 200

Size	F <sub>H</sub> [N] Holding force	F <sub>S</sub> [N] Clamping force at 4 bar ≈	a ≈	b <sub>1</sub>	b <sub>2</sub>	d <sub>1</sub>	d <sub>2</sub>	d <sub>3</sub>	Female thread-∅ for hose	h <sub>1</sub>	h <sub>2</sub>
70	700	500	20	42	5,5	M 5	4,5	G 1/8	4	50	22,5
125	1600	700	28	48	6,5	M 6	5,5	G 1/8	4	70	30
200	2200	900	40	53	8,5	M 8	6,5	G 1/8	4	80	35
300	2700	1200	42	74	10,5	M 10	8,5	G 1/4	6	96	46
400	3000	1400	66	74	12,5	M 12	8,5	G 1/4	8	106	51

Size	h <sub>3</sub>	h <sub>4</sub> ≈	l <sub>1</sub>	l <sub>2</sub>	l <sub>3</sub>	l <sub>4</sub> max.	m <sub>1</sub>	m <sub>2</sub>	m <sub>3</sub>	r	s
70	11	21	163	92	40	48	24	7	15	62,5	4
125	14	27	202	150	48	62	29	8	19	79	5
200	18	35	248	160	70	86	32	11,5	20	104	6
300	20	41	306	196	76	95	46	10,5	29	122	8
400	22	48	360	216	104	130	45	10,5	32	154	10

## Specification

Sheet metal parts in toughened steel C 10 German Material No. 1.0301 zinc plated, blue passivated  
Bearing pins case hardened  
Bearing bushes (as from size 200) case hardened  
Bearing pins for cylinder case hardened  
double acting cylinders max. pressure 6 bar  
All moving parts lubricated with special grease

## Information

The clamping principle of pneumatically operated clamps GN 860 is identical in construction and dimensions to the manually operated vertical clamps GN 810.

To ensure an extended life of the mechanical parts as well as the air cylinders the operating pressure should not exceed 6 bar. In addition a lubro control unit should be fitted in the air line.

Pneumatically operated clamps GN 860 are also available as from size 200 as a version M (magnetic piston). In conjunction with proximity switches GN 896.1 / GN 896.2 the piston position can be sensed and the generated impulse can be used to transmit an electrical signal. Further technical details on this are given on page 647.

Further information on pneumatically operated clamps

## How to order

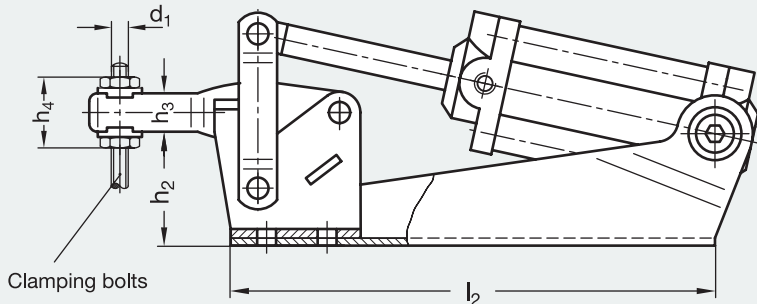
**Pneum. operated clamp GN 860-200-AP3**

Code No.	Size	Type
----------	------	------

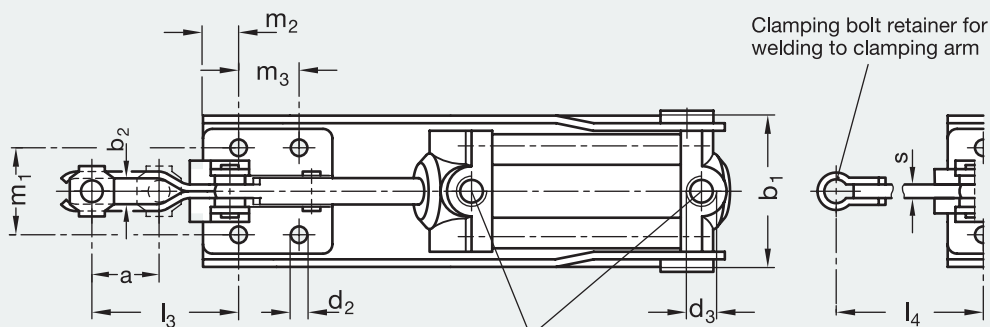
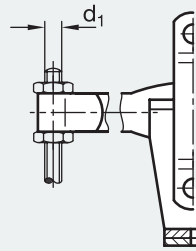
**Pneumatically operated clamp with cylinder for proximity switch GN 860-300-AP3-M**

Code No.	Size	Type	Magnetic piston
----------	------	------	-----------------

Type AP3



Type EP3



Compressed air connections

2.4

