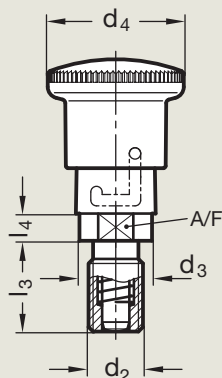
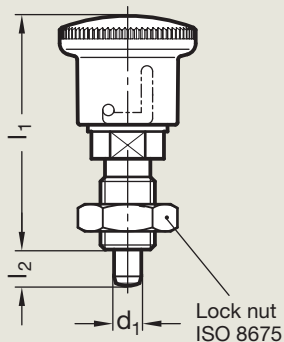


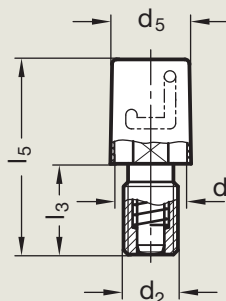
Plunger retracted



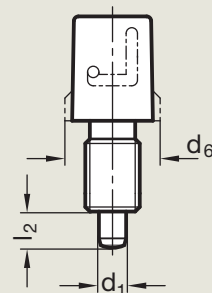
Plunger protruded and locked



Plunger retracted



Plunger protruded and locked



Type **A** Operation with knob, without lock nut

Type **AK** Operation with knob, with lock nut

Type **B** Operation with key, without lock nut

Type **BK** Operation with key, with lock nut

d ₁	d ₂	d ₃	d ₄	d ₅	d ₆	l ₁ ≈	l ₂	l ₃	l ₄ ≈	l ₅	A/F	Spring load N ≈	
Plunger												initial	end
6	M 12 x 1,5	16	28	17	-	51,5	8	20	6	43	14	12	27
8	M 16 x 1,5	18	28	17	20	54,5	10	22	6	48	16	12	35

Specification

- ▶ Threaded socket
Steel
zinc plated, blue passivated
- ▶ Plunger
Stainless Steel
German Material No. 1.4305
- ▶ Spring
Stainless Steel
German Material No. 1.4310
- ▶ Knob plastic
Technopolymer (Polyamide PA)
black matt finish
not removable
- ▶ Sleeve plastic
Technopolymer (Polyamide PA)
black matt finish
not removable

Information

If not operated, the plunger of the locking plungers GN 816.1 is retracted. To move out, move against the spring force and hold in the end position by turning by 90°.

The shape of the cam curve secures the plunger against accidental operation.

For the execution with operation with key (Type B / BK) a key is required to move the plunger. In this execution, a cover sleeve provides additional security and safety from unauthorized removal of the locking plunger. The cover sleeve also provides additional protection against malfunction caused by dirt.

Locking plungers GN 816

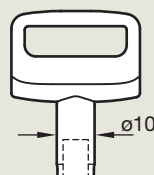
page 34

How to order

Locking plunger
GN 816.1-6-M12x1,5-B



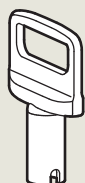
Key
GN 816.1-10



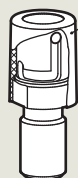
The key has to be ordered separately.



Execution with operation with key (Type **B** / Type **BK**)

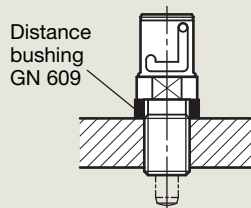


Key GN 816.1-10



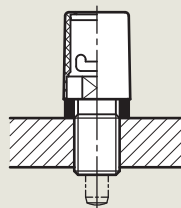
Cover sleeve

Assembly instruction



Distance bushing GN 609

Screw in threaded socket



Clip in cover sleeve