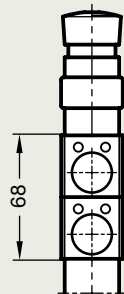
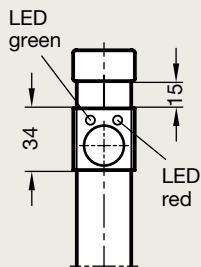
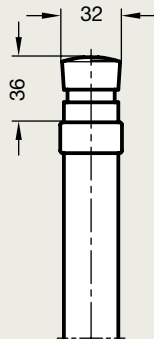
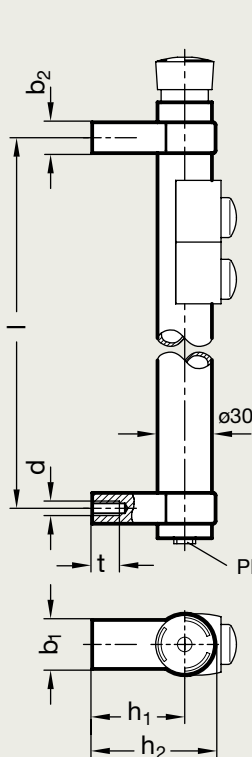


Application example:

with emergency stop

with one button

with emergency stop
and 2 buttons



Type **T0** without button
 Type **T1** with 1 button
 Type **T2** with 2 buttons

Identification no. **1** without emergency stop
 Identification no. **2** with emergency stop

Plug M12x1, 12-pole

| Length l ±0,2 | d | b ₁ | b ₂ | h ₁ | h ₂ | t min. |
|---------------|-----|----------------|----------------|----------------|----------------|--------|
| 200 | M 8 | 27 | 17 | 51 | 68 | 15 |
| 300 | M 8 | 27 | 17 | 51 | 68 | 15 |

Specification

- ▶ Tube Ø 30 x 1,5
Aluminium
Plastic coated black **SW** RAL 9005 textured finish
anodized **EL** natural colour
- ▶ Handle shanks
zinc die casting
Plastic coated black **SW** RAL 9005 textured finish
- ▶ Cover caps
(for execution without emergency stop)
Plastic light grey

Information

Tubular handles GN 331 (photo page 16) with power switching function are suitable for unlocking safety tumblers in rotating, detachable or side-sliding safety devices which must be closed in order to safeguard the required operational safety.

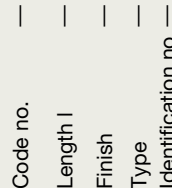
By integrating functions such as emergency stop, start, release, reset and LED status display, this tubular handle allows the machine to be monitored and operated directly at the door or gate.

Tubular handles GN 331 save mounting and installation work, are attractively designed and optimise ergonomics: the switching and operating functions are located precisely where they are needed.

Tubular handles GN 332 (with power switching function, cranked) page 18
Tubular handles GN 333.1 (without power switching function) page 102

How to order

Tubular handle GN 331-300-EL-T2-1



How to order the connection cable GN 330 page 15

Characteristics of the standard executions GN 331

The tubular handles have the CE marking
 low voltage guideline 06 / 95 / EG

| | | | |
|-------------------------------|---|--|--|
| Emergency stop: | 2 channel | | |
| 1. Button: Release button: | Changeover contact | | |
| 2. Button: Start button: | Maker | | |
| Button colour: | for each button a set of caps is included, in this colours: red, green, blue | | |
| Switching voltage: | max. 30 V AC max. 1,5 A | | |
| Operating voltage (LEDs): | 24 V DC ± 15% | | |
| Contact termination: | M12x1, 12-pole | | |
| Pin configuration: | | | |
| Protection class: | IP 67 | | |
| Connection cable: | Socket for plug connection M12x1, 12-pole | | |

- straight **G**
- angled **W**
- Lenghts **5 meters**
10 meters

How to order

Cable connection
GN 330-M12x1-12-G- 5
G-10

Cable connection
GN 330-M12x1-12-W- 5
W-10

Additional variations as special application

| | | | |
|----------------------------|--|--|--|
| Emergency stop: | 1 channel | | |
| Number of buttons > 2 | Maker | | |
| Button optional with | Breaker | | |
| Button with labelling area | Changeover contact | | |
| Contact termination: | M12x1, 8-pole or M23x1, up to 12-pole | | |