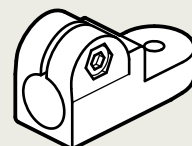
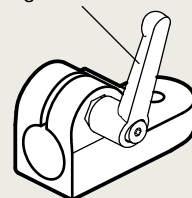



Adjustable clamping lever GN 911



Id. No. 1 with clamping screw DIN 912, zinc plated

Id. No. 2 with Stainless Steel-clamping screw DIN 912

d_1 Bore B	b Swivel width	d_2	d_3 Clamping screw	d_4	k	l_1	l_2	m	s	t	Clamping lever for d_3 
B 12	25	6,5	M 6	M 6	25	61	34,5	48,5	10	12,5	GN 911-M6-22
B 14	25	6,5	M 6	M 6	25	61	34,5	48,5	10	12,5	GN 911-M6-22
B 16	25	6,5	M 6	M 6	25	61	34,5	48,5	10	12,5	GN 911-M6-22
B 18	25	6,5	M 6	M 6	25	61	34,5	48,5	10	12,5	GN 911-M6-22

Specification

- ▶ Aluminium plastic coated black **SW** RAL 9005 textured finish
- blank **BL** matt shot-blasted
- ▶ Clamping bores machined
- ▶ Socket cap screws DIN 912 Steel zinc plated / St. Steel German material No. 1.4301
- ▶ Hexagon nuts DIN 985 Steel zinc plated / St. Steel German material No. 1.4301
- ▶ Adjustable clamping lever GN 911 Zinc die casting Inserts / Distance bushings Stainless Steel German Material No. 1.4305 page 63

Information

The clamping bore of the swivel clamp connectors GN 275 (photo page 46 / 47) is machined and designed for construction tubings GN 990 or DIN 2391, DIN 2395 and DIN 2462 respectively.

The standard clamping bolt is a socket cap screw DIN 912. It can be replaced by an adjustable clamping lever GN 911 (see table of dimensions).

Swivel clamp connectors GN 275 can be assembled with swivel clamp connectors GN 271, GN 273 or GN 277 to create swivel clamp connector joints.

Construction tubings GN 990 page 59

Swivel clamp connector joints GN 281 (Combination of GN 275 with GN 271) page 48

How to order

Swivel clamp connector GN 275-B18-2-SW

Code No.	d_1	Id. No.	Finish

Adjustable clamping levers GN 911 have to be ordered separately. They are supplied disassembled.