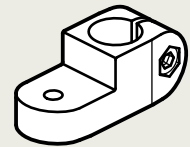
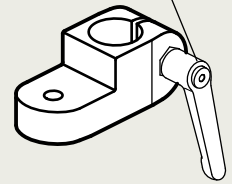
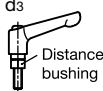


Adjustable clamping lever GN 911



Id. No. 1 with clamping screw DIN 912, zinc plated

Id. No. 2 with Stainless Steel-clamping screw DIN 912

d ₁	b	d ₂	d ₃	d ₄	k	Length l	m	s	t	Clamping lever for d ₃
Bore B	Swivel width		Clamping screw							
B 12	25	6,5	M 6	M 6	25	64	29,5	10	12,5	GN 911-M6-22
B 14	25	6,5	M 6	M 6	25	64	29,5	10	12,5	GN 911-M6-22
B 16	25	6,5	M 6	M 6	25	64	29,5	10	12,5	GN 911-M6-22
B 18	25	6,5	M 6	M 6	25	64	29,5	10	12,5	GN 911-M6-22

Specification

- ▶ Aluminium plastic coated black **SW** RAL 9005 textured finish

blank **BL**
matt shot-blasted

- ▶ Clamping bores machined
- ▶ Socket cap screws DIN 912 Steel zinc plated / St. Steel German material No. 1.4301
- ▶ Hexagon nuts DIN 985 Steel zinc plated / St. Steel German material No. 1.4301
- ▶ Adjustable clamping lever GN 911 Zinc die casting Inserts / Distance bushings Stainless Steel German Material No. 1.4305

Information

The clamping bore of the swivel clamp connectors GN 273 (photo page 46 / 47) is machined and designed for construction tubings GN 990 or DIN 2391, DIN 2395 and DIN 2462 respectively.

The standard clamping bolt is a socket cap screw DIN 912. It can be replaced by an adjustable clamping lever GN 911 (see table of dimensions).

Swivel clamp connectors GN 273 can be assembled with swivel clamp connectors GN 271, GN 275 or GN 277 to create swivel clamp connector joints.

Construction tubings GN 990 page 59

Swivel clamp connector joints GN 283 (Combination of GN 273 with GN 275) page 50

Swivel clamp linear actuator connectors GN 273.1 page 80

Sensor holders GN 273.4 page 58

How to order

Swivel clamp connector GN 273-B16-1-SW

Code No.	d ₁	Id. No.	Finish

Adjustable clamping levers GN 911 have to be ordered separately. They are supplied disassembled.