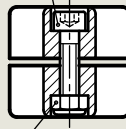


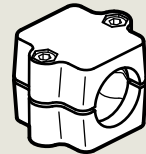
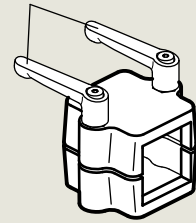
Clamping thread d_2

Clamping screw
Socket cap screw DIN 912

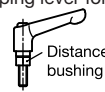


Hexagon nut DIN 985
self locking (Polyamide ring)

Adjustable
clamping lever GN 911



Id. No. 1 with 2 clamping screws DIN 912, zinc plated Id. No. 2 with 2 Stainless Steel-clamping screws DIN 912

d_1 Bore B	s Square V	k Clamping length	d_2 Clamping screw	l_1	l_2	l_3	Clamping lever for d_2 
B 20	V 20	50	M 8	68	46	48	GN 911-M 8-40
B 25	V 25	50	M 8	68	46	48	GN 911-M 8-40
B 30	V 30	50	M 8	68	46	48	GN 911-M 8-40
B 30	V 30	60	M 8	79	59	58	GN 911-M 8-55
B 32	-	60	M 8	79	59	58	GN 911-M 8-55
B 35	V 35	60	M 8	79	59	58	GN 911-M 8-55
B 40	V 40	60	M 8	79	59	58	GN 911-M 8-55
B 40	V 40	76	M 10	98	70	73	GN 911-M10-63
B 42	-	76	M 10	98	70	73	GN 911-M10-63
B 45	V 45	76	M 10	98	70	73	GN 911-M10-63
B 48	-	76	M 10	98	70	73	GN 911-M10-63
B 50	V 50	76	M 10	98	70	73	GN 911-M10-63

Specification

- ▶ Aluminium plastic coated black **SW** RAL 9005 textured finish
- blank **BL** matt shot-blasted
- ▶ Clamping bores not machined
- ▶ Socket cap screws DIN 912 Steel zinc plated / St. Steel German material No. 1.4301
- ▶ Hexagon nuts DIN 985 Steel zinc plated / St. Steel German material No. 1.4301
- ▶ Adjustable clamping lever GN 911 Inserts / Distance bushings Stainless Steel German Material No. 1.4305

Information

The clamping bores of the tube connectors GN 241 (**photo** page 37) are not machined and designed for construction tubings GN 990 or DIN 2391, DIN 2395 and DIN 2462 respectively.

The standard clamping bolts are socket cap screws DIN 912. They can be replaced by adjustable clamping levers GN 911 (see table of dimensions).

Construction tubings GN 990

page 59

How to order

Tube connectors GN 241-V45-76-1-SW

Code No.				
s (d1)		k	Id. No.	Finish

Adjustable clamping levers GN 911 have to be ordered separately. They are supplied disassembled.