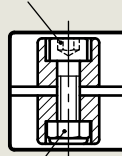
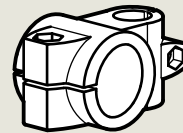
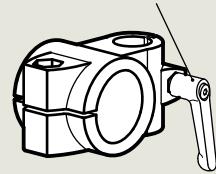


Clamping screw
Socket cap screw DIN 912



Hexagon nut DIN 985
self locking (Polyamide ring)

Adjustable
clamping lever GN 911



Id. No. 1 with 2 clamping screws DIN 912, zinc plated Id. No. 2 with 2 Stainless Steel-clamping screws DIN 912

d1 Bore B	d2 Bore B				d3 Clam- ping screw	d4 Clam- ping screw	k1 Clam- ping length	k2 Clam- ping length	l1	l2	l3	m	Clamping lever	
	B 12	B 14	B 16	B 18									for d3	for d4
B 20	B 12	B 14	B 16	B 18	M 8	M 6	40	36	81,5	40	26	27	GN 911-M 8-32	GN 911-M6 25
B 25	B 12	B 14	B 16	B 18	M 8	M 6	40	36	81,5	40	26	27	GN 911-M 8-32	GN 911-M6-25
B 30	B 12	B 14	B 16	B 18	M 8	M 6	40	36	81,5	40	26	27	GN 911-M 8-32	GN 911-M6-25
B 40	B 20	B 25	B 30	-	M 10	M 8	65	59	122	65	40	45	GN 911-M10-55	GN 911-M8-32
B 42	B 20	B 25	B 30	-	M 10	M 8	65	59	122	65	40	45	GN 911-M10-55	GN 911-M8-32
B 45	B 20	B 25	B 30	-	M 10	M 8	65	59	122	65	40	45	GN 911-M10-55	GN 911-M8-32
B 48	B 20	B 25	B 30	-	M 10	M 8	65	59	122	65	40	45	GN 911-M10-55	GN 911-M8-32
B 50	B 20	B 25	B 30	-	M 10	M 8	65	59	122	65	40	45	GN 911-M10-55	GN 911-M8-32

Specification

- ▶ Aluminium plastic coated black **SW** RAL 9005 textured finish
- ▶ blank **BL**, matt shot-blasted
- ▶ Clamping bores machined
- ▶ Socket cap screws DIN 912 Steel zinc plated / St. Steel German material No. 1.4301
- ▶ Hexagon nuts DIN 985 Steel zinc plated / St. Steel German material No. 1.4301
- ▶ Adjustable clamping lever GN 911 Inserts / Distance bushings Stainless Steel

Information

The clamping bores of the two-way connector clamps GN 133 (photo page 11) are machined and designed for construction tubings GN 990 or DIN 2391, DIN 2395 and DIN 2462 respectively.

The standard clamping bolts are socket cap screws DIN 912. They can be replaced by adjustable clamping levers GN 911 (see table of dimensions).

Special execution:
different combinations of bores d1 / d2

Construction tubings GN 990

page 59

How to order

**Two-way connector clamp
GN 133-B30-B16-1-SW**

Code No.	d1	d2	Id. No.	Finish
----------	----	----	---------	--------

Adjustable clamping levers GN 911 have to be ordered separately. They are supplied disassembled.